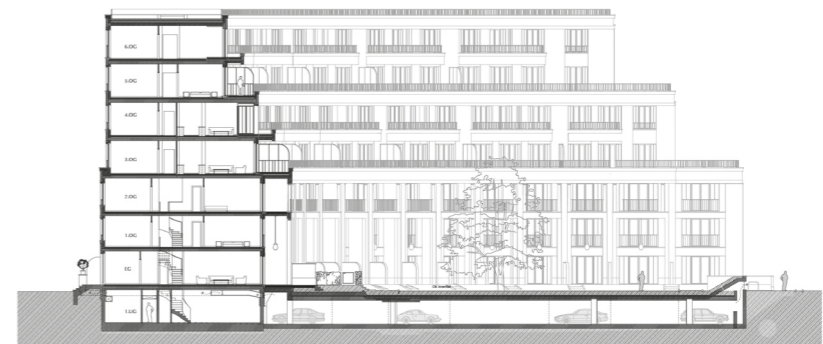


Prenzlauer Bogen Berlin Prenzlauer Berg

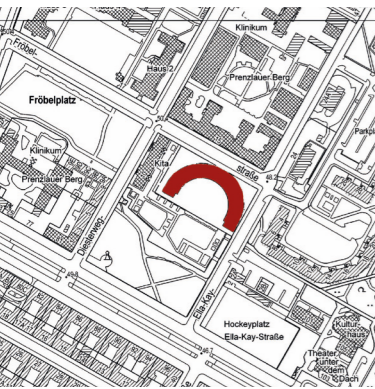
Client: Asset Berlin Grundbesitz AG
Project stages: 1 – 4, Artistic management
Time frame: 2007 – 2012
GFA: 12.500 sqm
Budget: 19,5 mio. Euro
Site: Fröbelstraße / Ella-Kay-Straße
 10405 Berlin

Copyright: Nöfer Architekten | Maximilian Meisse



Formerly owned by Berlin's waste disposal authority, the site on Fröbelstraße is advantageously located in immediate proximity to the trendy district of Prenzlauer Berg on one side and, on the other, to a tranquil neighbourhood twined by leafy parks. The upscale building project realized here provides several different dwelling types, ranging from two- or three-storey townhouses to penthouse duplexes with stunning views of the city. Its crescent shape lends the large building a

strong individuality and independence. Adjoining the private gardens on the ground floor, a well-tended public garden references the traditional crescents of London and Bath. Setbacks on the upper floors on the garden side create room for spacious terraces and "hanging" roof gardens. Drawing on several models, the ensemble is highly allusive, alternately reminiscent of Babylonian gardens and Roman theatres, stately homes and terrace houses.



Prenzlauer Bogen Berlin Prenzlauer Berg

Client: Asset Berlin Grundbesitz AG
Project stages: 1 – 4, Artistic management
Time frame: 2007 – 2012
GFA: 12.500 sqm
Budget: 19,5 mio. Euro
Site: Fröbelstraße / Ella-Kay-Straße
10405 Berlin

Copyright: Nöfer Architekten | Maximilian Meisse

